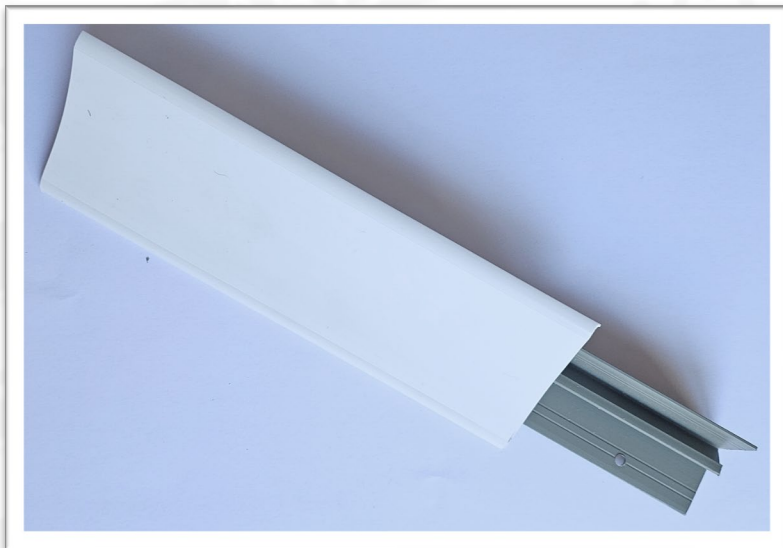


CARBOIMPACT

CATÁLOGO DE PERFILERÍA DE PROTECCIÓN Y SANITARIA



CONTENIDO

PERFILERÍA DE PROTECCIÓN EN PVC-u:

- PASAMANOS [Pág. 5](#)
- PARACHOQUES [Pág. 10](#)
- ESQUINEROS [Pág. 15](#)
- PROTECCIÓN PUERTAS [Pág. 21](#)
- COLORES Y ACABADOS [Pág. 23](#)

PERFILERÍA DE PROTECCIÓN EN POLICARBONATO:

- PASAMANOS Y PARACHOQUES [Pág. 24](#)
- ESQUINEROS [Pág. 25](#)
- FALDONES PUERTAS [Pág. 26](#)
- COLORES [Pág. 27](#)

■ **PERFILERÍA SANITARIA EN PVC** [Pág. 29](#)

■ **PERFILERÍA SANITARIA EN ALUMINIO** [Pág. 31](#)

Pasamanos, parachoques, esquineros y protectores de puertas para todo tipo de edificios cuyas paredes sufran rozaduras, golpes y desgastes. No absorben la suciedad, son fácilmente lavables y muy higiénicos.

Disponibles en PVC-U y Policarbonato.



PVC-U

POLICARBONATO

PASAMANOS

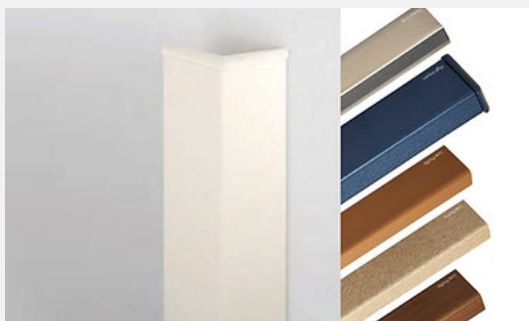
Diferentes diseños para cada necesidad.
Disponibles en más de 42 colores y acabados imitación madera. Si lo prefiere, también en acero inoxidable.

**PARACHOQUES**

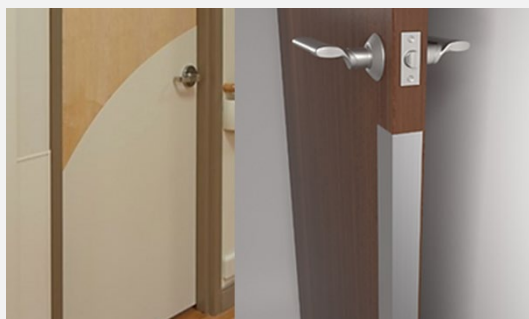
Robustos y resistentes frente a fuertes impactos.
Diseños elegantes y variedad de soluciones.
Disponibles en más de 42 colores y acabados imitación madera.

**PASAMANOS**

Alta resistencia frente a golpes en esquinas.
Diferentes modelos y soluciones.
Más de 42 colores y acabados imitación madera para cualquier tipo de ambiente.

**PARACHOQUES**

Protección de puertas mediante faldones y cantos.
Posibilidad de corte por CNC.
Faldones en Policarbonato y PVC-u.



PASAMANOS

800 Handrail



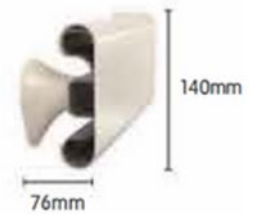
Materials

- PVC-u

Colours

- Standard solid colours
- Woodlands

- Ligature-resistant bracket and 50mm standoffs available upon request.



900SSR Round Handrail



Materials

- Type 304 Stainless Steel

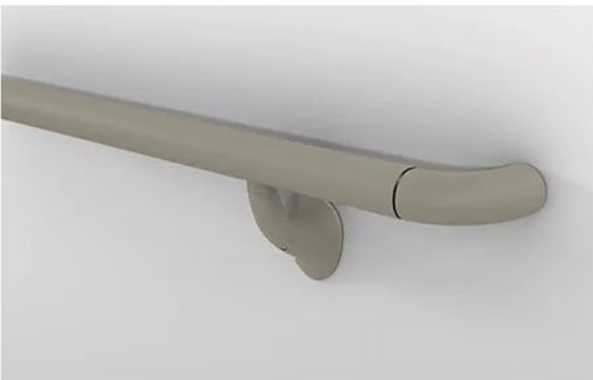
Colours

- #4 Brushed Finish

- 50mm standoffs available upon request.



910 Handrail



Materials

- PVC-u

Colours

- Standard solid colours
- Woodlands
- Elements

- 50mm standoffs available upon request.



PASAMANOS

920 Handrail



Materials

- PVC-u

Colours

- Standard solid colours
- Woodlands
- Elements

- 50mm standoffs available upon request.



940 Handrail



Materials

- PVC-u

Colours

- Standard solid colours
- Woodlands

- 50mm standoffs standard.
- HTM 00-04 compliant bracket available.



1000 Handrail



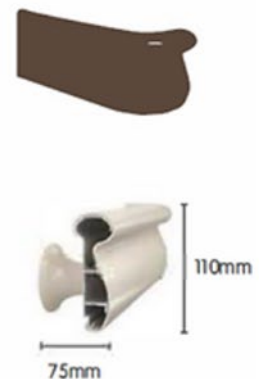
Materials

- PVC-u

Colours

- Standard solid colours
- Woodlands

- Ligature-resistant bracket and 50mm standoffs available upon request.



PASAMANOS

2000 Handrail



Materials

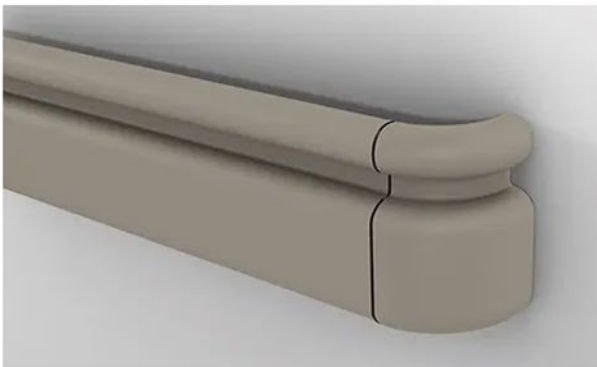
- PVC-u

Colours

- Standard solid colours
- Woodlands



3110 Round Handrail



Materials

- PVC-u

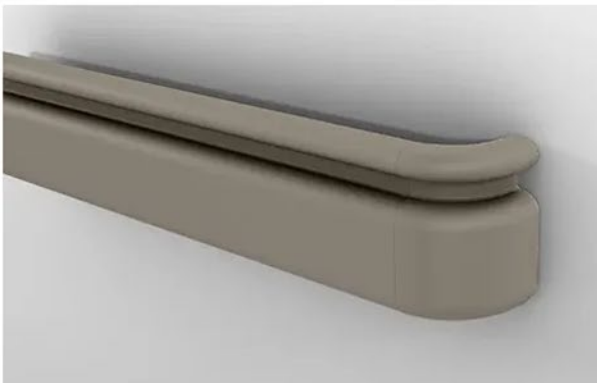
Colours

- Standard solid colours
- Woodlands

- Ligature-resistant bracket and 50mm standoffs available upon request.



3130 Oval Handrail



Materials

- PVC-u

Colours

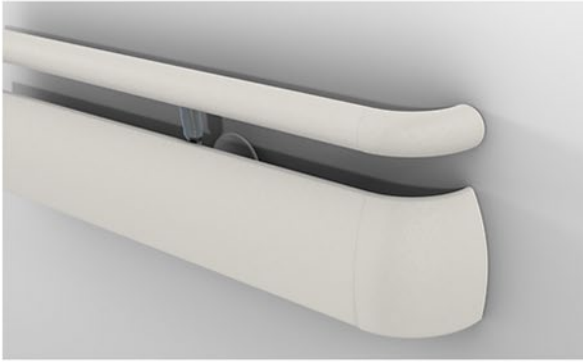
- Standard solid colours
- Woodlands

- Ligature-resistant bracket and 50mm standoffs available upon request.



PASAMANOS

3510 Handrail



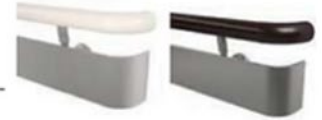
Materials

- V-Vinyl

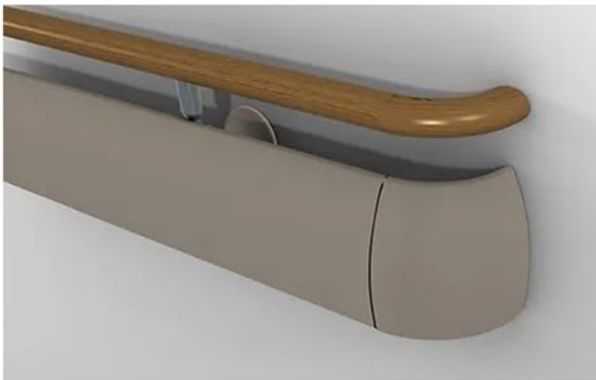
Options

- FV - Woodlands
- S - Stainless Steel
- M - Metal Tone

- 50mm standoffs available upon request.



3530 Handrail



Materials

- V-Vinyl

Options

- FV - Woodlands
- S - Stainless Steel
- M - Metal Tone

- 50mm standoffs available upon request.



3400 Handrail



Materials

- PVC-U

Colours

- Standard solid colours
- Woodlands

- 50mm standoffs available upon request.
- HTM 00-04 bracket available.

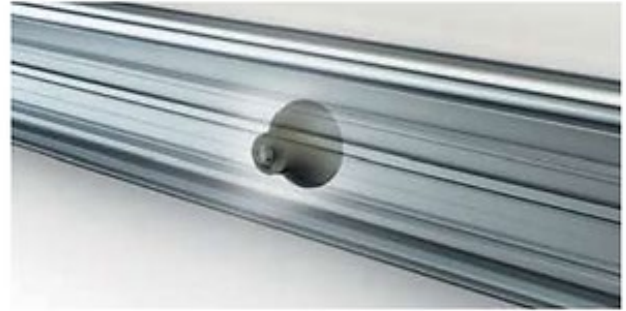


PASAMANOS



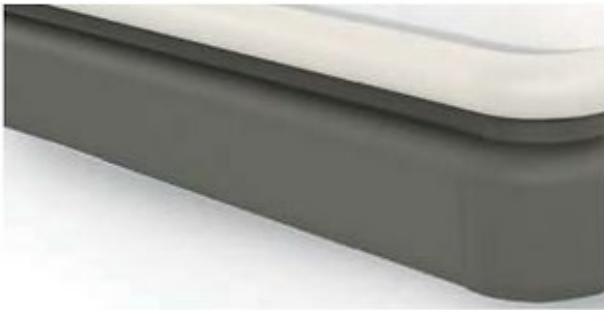
Aluminium retainer

Aluminium retainer and splice provides structural stability and allows extended lengths over 3.66m.



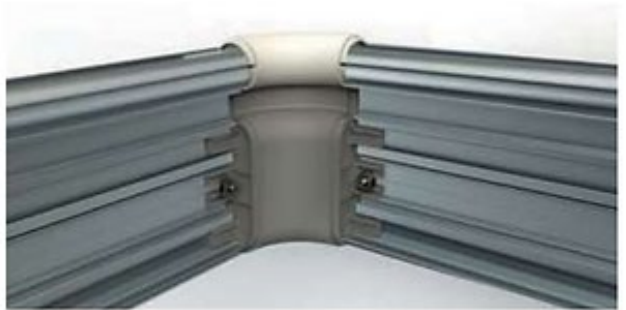
Mounting bracket

Mounting bracket keeps hands a safe distance from the wall.



Cover

Covers are available in a variety of colours to coordinate with other interior finishes.



Inside/outside corners

Inside/outside corners provide a smooth transition for corner applications.



Returns

Returns finish gives the handrail installation a professional look.



Add a reveal

Add a reveal as a decorative element, standard with every Woodland Handrail order.

PARAQUOQUES

2500 Chair Rail



Materials

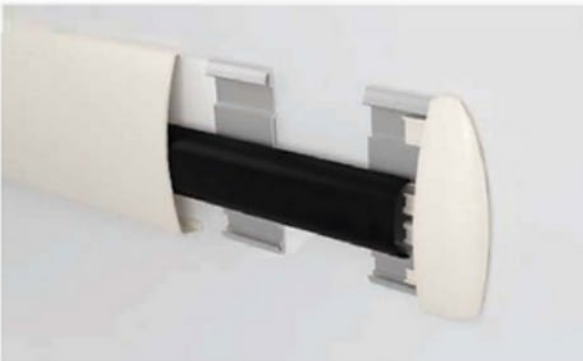
- PVC-U

Colours

- Standard solid colours
- Woodlands



Infinity Bracket



The Infinity Bracket is a shortened Aluminium retainer that reduces the cost of having a full retainer. It's also easier to install in short runs.

Features and benefits

- Reduces cost
- Easy to install
- Reduces material waste

- Available on the 700, 1400, 1500, 1600, 1800 wall guards.

700 Wall Guard



Materials

- PVC-U

Colours

- Standard solid colours
- Woodlands

Retainer Choices

- Continuous Bracket
- Infinity Bracket



PARAQUQUES

1400 Wall Guard



Materials

- PVC-u

Colours

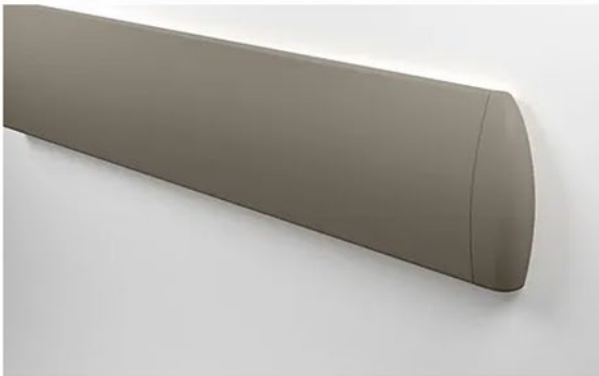
- Standard solid colours
- Woodlands

Retainer Choices

- Continuous Bracket
- Infinity Bracket



1500 Silhouette Wall Guard



Materials

- PVC-u

Colours

- Standard solid colours
- Woodlands

Retainer Choices

- Continuous Bracket
- Infinity Bracket



1600 Wall Guard



Materials

- PVC-u

Colours

- Standard solid colours

Retainer Choices

- Continuous Bracket
- Infinity Bracket



PARAQUQUES

1800 Wall Guard



Materials

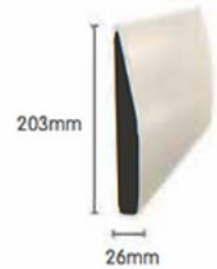
- PVC-u

Colours

- Standard solid colours

Retainer Choices

- Continuous Bracket
- Infinity Bracket



1300 Wall Guard

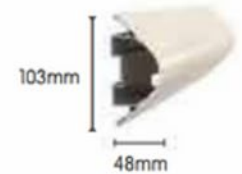


Materials

- PVC-u

Colours

- Standard solid colours



50SS Stainless Steel Wall Guard



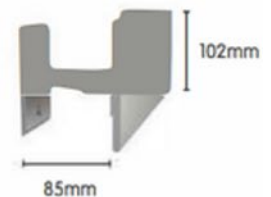
Materials

- Stainless Steel Type 304



Contains up to 75% post-consumer recycled material.

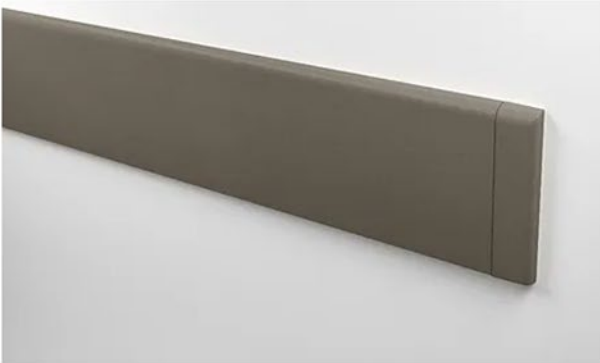
- Widths ranging up to 152mm available, visit inprocop.com for more information.



Factory pre-cut sections to field measurements non-returnable.

PARAQUOQUES

High Impact Wall Base



Materials

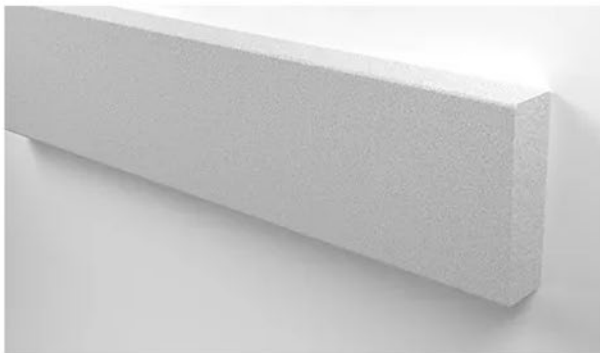
- PVC-u

Colours

- Standard solid colours



NuTree® Wall Guard



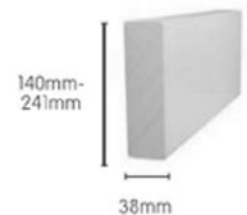
NuTree® is a high-impact, heavy-duty solution for those areas in your building that take the toughest abuse.

NuTree® products are great for back of house or maintenance areas that suffer the endless damage caused by carts, heavy equipment and more.

Custom sizes and colours available with minimums. Multiple heights and thicknesses available. Please reference Part Number Index for more information.

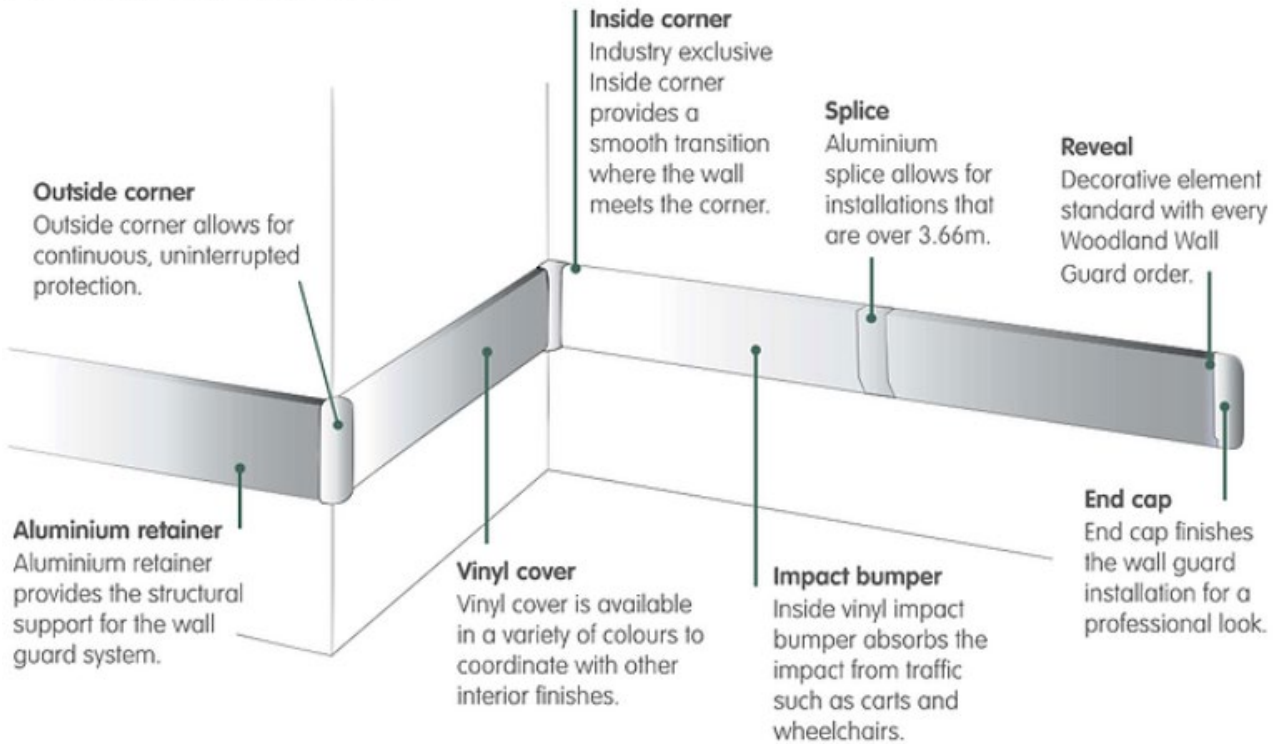
Colours

Black 11	Weather Wood 05
Dove Gray 13	Sandstone 04



PARAQUOS

Anatomy of wall guards



ESQUINEROS

Corner Guard, No Tape



Materials

- PVC-U

Colours

- Standard solid colours

Angles

90°

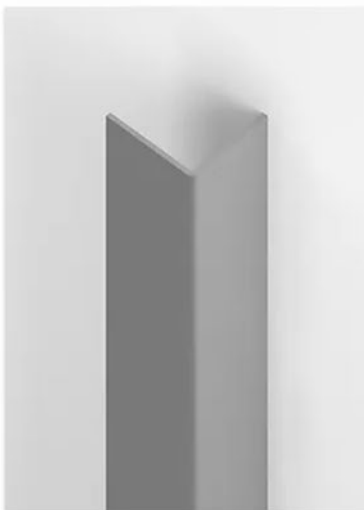
Heights

1.2m, 2.4m, 3.66m



30mm, 50mm
or 75mm

Aluminium Corner Guard



Angles

90° | 19mm, 38mm wings

Heights

1.2m, 2.4m

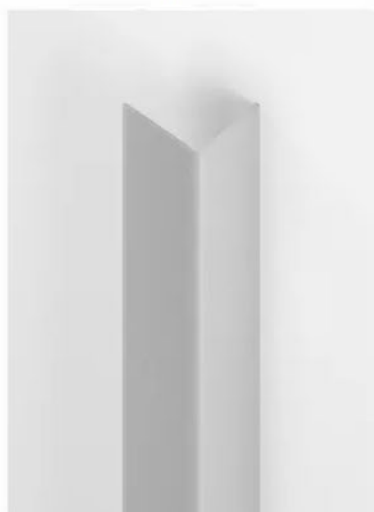


19mm
or 38mm

- Product to be installed with adhesive.

ESQUINEROS

Clear Polycarbonate Corner Guard



Not provided with pre-drilled holes.

Angles
90° and 135° | 19mm, 29mm, 64mm wings

Heights
1.2m, 2.4m

- Custom sizes available, please call for details.



29mm
or 19mm



64mm

NuTree® Corner Guard



Materials
Post-consumer recycled No.2 plastic

Colours
● Black only

Angles
90° | 80mm wing

Heights
2.4m

- Multiple heights and thicknesses available. Please reference Part Number Index for more information.



80mm x 80mm

ESQUINEROS

130 Corner Guard



Materials

PVC-u

Colours

- Standard solid colours
- Woodlands

Angles

135° | 76mm wing

Heights

1.2m, 2.4m, 3.66m

- Custom bendable aluminium retainer with flexible top caps available.



76mm x 76mm

150 Corner Guard



Materials

PVC-u

Colours

- Standard solid colours
- Woodlands

Angles

90° | 76mm wing

Heights

1.2m, 2.4m, 3.66m

- Custom bendable aluminium retainer with flexible top caps available.



76mm x 76mm

End wall option
76mm x 76mm

ESQUINEROS

160 Corner Guard



Materials
PVC-u

Colours
• Standard solid colours
• Woodlands

Angles
90° | 51mm wing

Heights
1.2m, 2.4m, 3.66m

- Custom bendable aluminium retainer with flexible top caps available.



51mm x 51mm



End wall option
51mm x 51mm

130F Flush Mount



Materials
PVC-u

Colours
• Standard solid colours
• Woodlands

Angles
135° | 76mm wing

Heights
1.2m, 2.4m, 3.66m



76mm x 76mm

ESQUINEROS

150F Flush Mount



Materials

PVC-u

Colours

- Standard solid colours
- Woodlands

Angles

90° | 76mm wing

Heights

1.2m, 2.4m, 3.66m



76mm x 76mm

160F Flush Mount



Materials

PVC-u

Colours

- Standard solid colours
- Woodlands

Angles

90° | 51mm wing

Heights

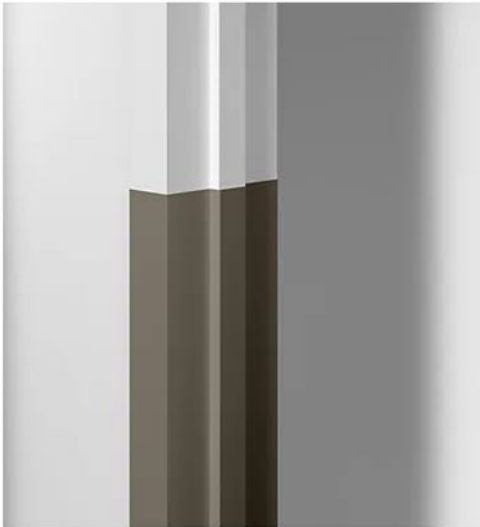
1.2m, 2.4m, 3.66m



51mm x 51mm

ESQUINEROS

Custom Door Frame Guards



Materials

- PVC-u

Colours

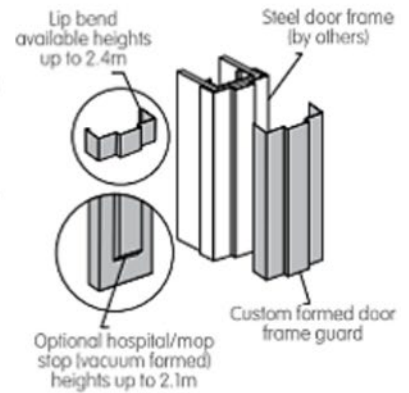
- Standard solid colours
- Woodlands

Standard Heights

915mm, 1.2m, 2.4m

- Install with contact cement.

Door Edge Protectors are custom products and are not returnable.



1700 Door Frame Guards

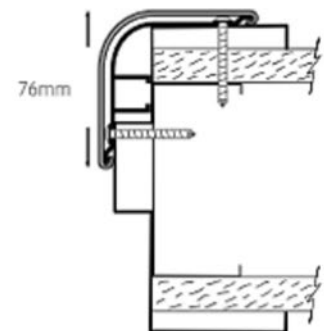


Materials

- PVC-u

Colours

- Standard solid colours
- Woodlands



PROTECCIÓN PUERTAS

Door Edge Protector

COLORES PVC



Materials

- PVC-U

Colours

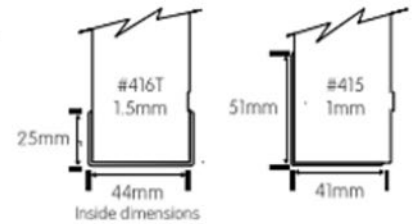
- Standard solid colours
- Woodlands

Standard Heights

915mm, 1.2m, 2.4m

- Install with contact cement.

Door Edge Protectors are custom products and are not returnable.



Door Face Protectors

Don't let heavy traffic lead to damage.

Doors are relentlessly pushed, banged and kicked open. Keep your doors and their surrounding environments in pristine condition.

PVC-u Door Face Protector

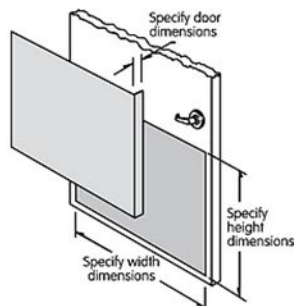


Materials

COLORES PVC

Colours

- Standard solid colours
- Elements
- Woodlands



Stainless Steel Door Face Protector



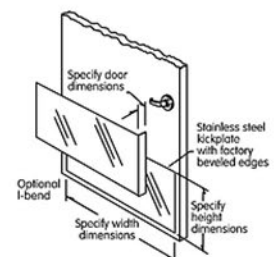
Materials

Stainless Steel Door Face Protection offers a #4 satin finish.

- Conforms to NSF Standard 51 for direct food contact in food service areas (Type 304 Stainless Steel).

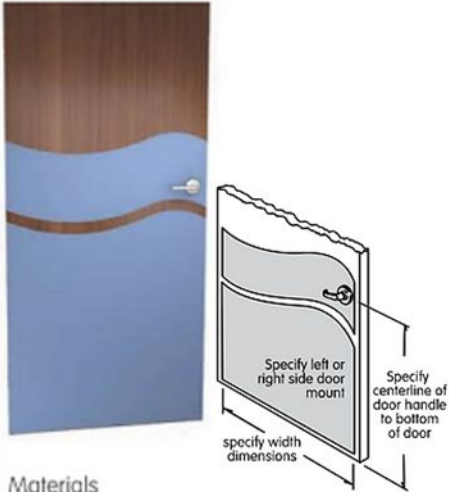
- Type 430 or 304
- 14, 16 or 18 gauge

Door Face Protection are custom products and are not returnable.



PROTECCIÓN PUERTAS

Designer Model 10

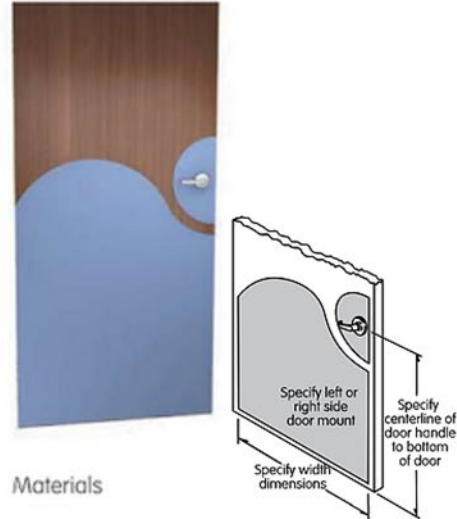


Materials

Colours

- Standard solid colours
- Elements
- Woodlands

Designer Model 20



Materials

Colours

- Standard solid colours
- Elements
- Woodlands

Designer Model 30





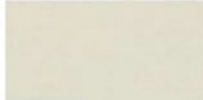









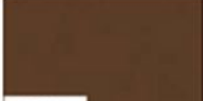


















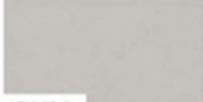
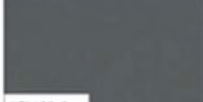

Materials

Colours

- Standard solid colours
- Elements
- Woodlands

COLORES Y ACABADOS

Standard solid colours

 LRV 78.7 Designer White 0101	 LRV 77.0 White Sand 0103	 LRV 71.1 Clam Shell 0154	 LRV 68.4 Eggshell 0111	 LRV 43.4 Burlap 0252	 LRV 70.5 Light Beige 0109
 LRV 56.9 Beeswax 0249	 LRV 77.77 Canary 1050	 LRV 69.84 Sunny Day 1051	 LRV 34.21 Honey 1053	 LRV 51.3 Sherbet 1052	 LRV 36.69 Mandarin 1054
 LRV 9.6 Truffle 0284	 LRV 7.7 Cabernet 0241	 LRV 11.2 Cardinal 0236	 LRV 55.21 Mint 1056	 LRV 59.33 Aloe 1057	 LRV 19.82 Clover 1058
 LRV 34.8 Crystal Jade 0187	 LRV 16.6 English Green 0125	 LRV 49.09 Cloudy 1059	 LRV 25.5 Buoyant Blue 0132	 LRV 19.5 Periwinkle 0272	 LRV 8.9 Point Blue 0165
 LRV 15.8 Purple Haze 0171	 LRV 17.36 Orchid 1055	 LRV 52.0 Taupe 0113	 LRV 22.4 River Rock 0351	 LRV 48.1 Silver 0105	 LRV 37.1 Dove Gray 0106
 LRV 17.5 Pewter Gray 0107	 LRV 42.2 Sharkskin 0350	 LRV 10.8 Castle 0256	 LRV 4.5 Black 0152		

Woodland patterns

Woodlands offer a wood grain appearance without the maintenance of traditional wood.

 LRV 57.7 Natural Maple 0531	 LRV 30.5 Applewood 0537	 LRV 15.9 Honeynut 0535	 LRV 9.2 Boston Cherry 0534	 LRV 37.3 Santa Rosa 0532	 LRV 6.3 American Walnut 0555
---	--	---	---	--	---

Elements patterns

 LRV 37.1 Brushed Silver 5E025	 LRV 17.5 Brushed Nickel 5E026
---	--

[VOLVER AL ÍNDICE](#)

PASAMANOS Y PARACHOQUES

HANDER 45



Material:
Policarbonato

Colores:
Según stock.

- Perfil aluminio + Policarbonato.
- Terminal remate (PC).
- Soporte en Policarbonato : 1 cada 50 cm.
- Esquinas interna o externa.



HANDER 140



Material:
Policarbonato

Colores:
Según stock.

- Perfil aluminio + Policarbonato (Alto 140 mm - ancho desde pared 76 mm).
- Terminal remate (PC).
- Soporte en Policarbonato : 1 cada 50 cm.
- Esquinas interna o externa.



BUMPER 200



Material:
Policarbonato

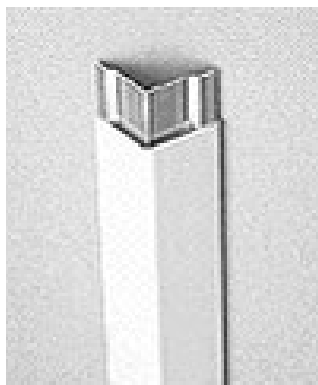
Colores:
Según stock.

- Perfil aluminio + Policarbonato (Alto 200 mm - ancho desde pared 25 mm) + goma amortiguación.
- Terminal remate (PC).
- Soporte Aluminio (1 cada 60 cm)



ESQUINEROS

CORNER A 50 - ESQUINERO DE POLICARBONATO CON ALMA DE ALUMINIO



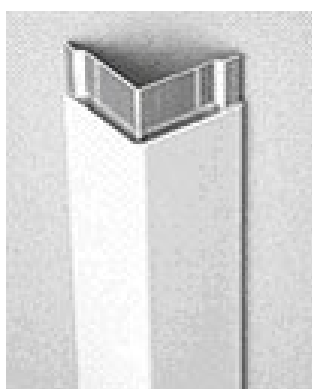
Material:
Policarbonato

Colores:
Según stock.

- Policarbonato alas 50 mm.
- Alma de aluminio.
- Terminal remate (PC).



CORNER A 76 - ESQUINERO DE POLICARBONATO CON ALMA DE ALUMINIO



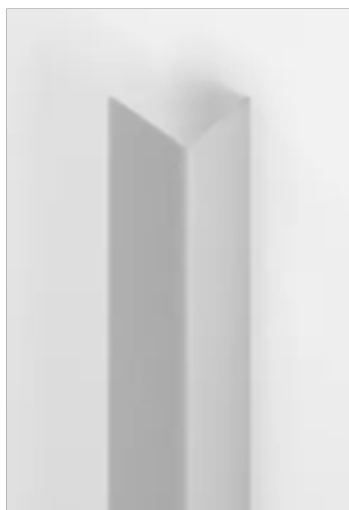
Material:
Policarbonato

Colores:
Según stock.

- Policarbonato alas 76 mm.
- Alma de aluminio.
- Terminal remate (PC).



ESQUINERO DE POLICARBONATO SIN ALMA DE ALUMINIO PARA ENCOLADO DIRECTO



Medidas:

- Ángulo de 90°.
- Alas estándar de 50 x 50 mm (estándar). Posibilidad de otras medidas, consultar.
- Altura hasta 3050 mm (estándar). Para otras medidas consultar.

Colores:
Según stock.



50 X 50 MM
o a medida

A MEDIDA

[VOLVER AL ÍNDICE](#)

PROTECCIÓN DE PUERTAS

FALDONES EN POLICARBONATO



Cortadas por CNC a medida y según su diseño.

Colores: Según stock.



[VOLVER AL ÍNDICE](#)

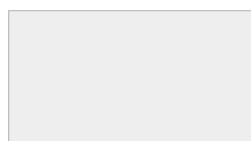
COLORES

COLORES PASAMANOS , PARACHOQUES Y ESQUINEROS CON ALMA DE ALUMINIO



COLOR Nº1	–	RAL 6017
COLOR Nº2	–	RAL 6019
COLOR Nº3	–	RAL 5002
COLOR Nº4	–	RAL 5015
COLOR Nº5	–	RAL 5024
COLOR Nº6	–	GIALLO PANTONE
COLOR Nº7	–	RAL 9001
COLOR Nº8	–	RAL 7035

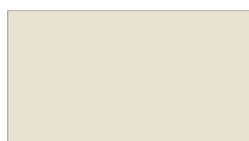
COLORES ESQUINEROS S/ALMA Y FALDONES EN POLICARBONATO



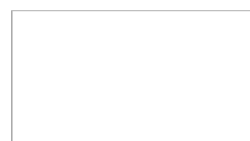
N°1: Gris Pelta RAL
9002 (Estándar)
2500 x 1250 x 1,7 mm



N°2: Gris RAL entre
7035 y 7038
3050 x 1250 x 1,7 mm



N°3: Beige RAL similar
1015
3050 x 1250 x 1,7 mm



N°4: Blanco
3050 X 1250 X 1,7 mm



N°5: Metalizado
3050 x 1250 x 1,7 mm



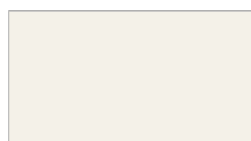
N°6: Negro
3050 x 1250 x 1,7 mm



N°7: Gris RAL similar
7035
3050 x 1250 x 1,7 mm



N°8: Gris RAL 7038
3050 x 1250 x 1,7 mm



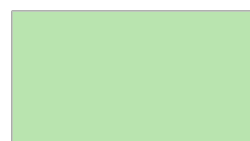
N°9: Blanco Roto RAL
similar 1013
3050 x 1250 x 1,7 mm



N°10: Beige
3050 x 1250 x 1,7 mm



N°11: Beige Oscuro
3050 x 1250 x 1,7 mm



N°12: Verde RAL similar
6034
3050 x 1250 x 1,7 mm



N°13: Azul Claro
3050 x 1250 x 1,7 mm



N°14: Azul Medio
Similar RAL 5012
3050 x 1250 x 1,7 mm



N°15: Lila
3050 x 1250 x 1,7 mm



N°16: Naranja RAL
similar 2008
2900 x 1200 x 1,7 mm

Perfilería sanitaria de aluminio/lacado blanco o de PVC, para uniones en media caña entre suelo, pared y techo, para evitar la acumulación de polvo y facilitar la limpieza.



EN COLOR BLANCO

Perfilería curva o cóncava.

- Perfil sanitario para la unión entre mampara - suelo, mampara - techo y mampara - mampara.
- Radio interior de 50 mm.
- Con base de PVC o de aluminio
- Con labios flexibles para una correcta unión al paramento.

Casquetes.

La unión cóncava queda en punto redondo mediante casquetes esféricos para evitar la acumulación de polvo y facilitar la limpieza.

Esquinas convexas.

Se realiza con perfil de chapa de acero lacado, en forma de L, con cantos plegados para permitir un correcto sellado.

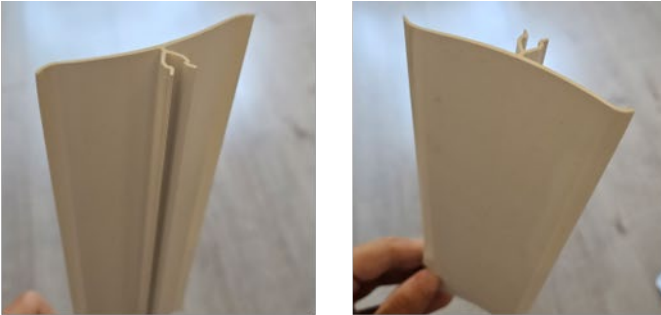


Se dispone de la posibilidad de que todas las uniones vayan selladas mediante mástic de poliuretano, este garantiza la hermeticidad asegurando la ausencia de hendiduras.

EN COLOR BLANCO

Información de los productos:

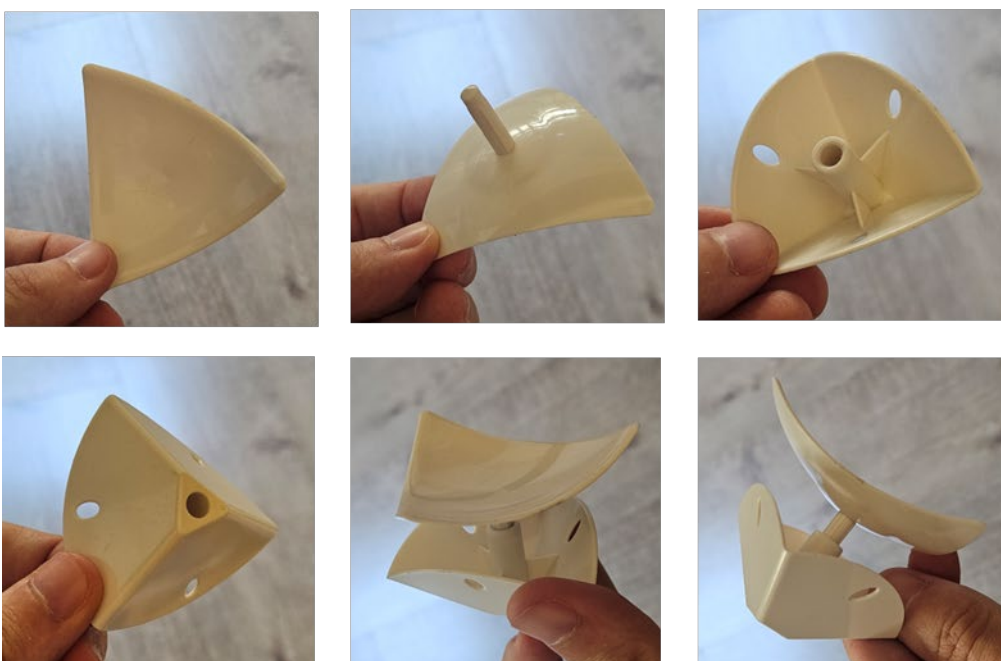
- Perfil sanitario.



- Base de PVC o de aluminio. Se clipa al perfil sanitario y se encola el conjunto.



- Casquetes. Se encola primero la hembra y luego se encaja el macho.



[VOLVER AL ÍNDICE](#)

EN COLOR BLANCO O ANODIZADO**Perfilería curva o cóncava.**

- Escocia utilizada para la unión entre mampara - suelo, mampara - techo y mampara - mampara.
- Radio interior de 50 mm.

Casquetes.

La unión cóncava queda en punto redondo mediante casquetes esféricos para evitar la acumulación de polvo y facilitar la limpieza.

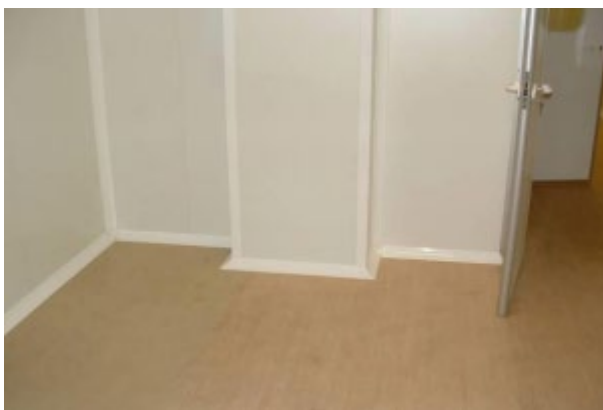
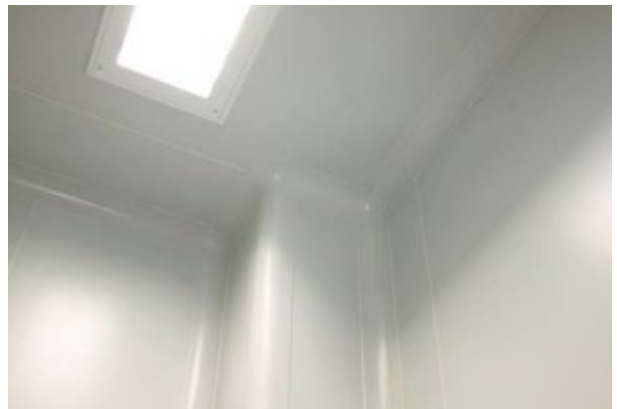
Esquinas convexas.

Se realiza en perfil de esquina redondo de aluminio o en forma de copa y rematado en suelo y techo con perfiles curvos de aluminio.

La unión de dos escocias con el perfil de esquina queda resuelta con un pie de copa, redondo en aluminio de fundición.

Colores.

Color estándar blanco pirineos, otro blanco ral-9016. Otros colores bajo pedido.



EN COLOR BLANCO O ANODIZADO

Composición química según la norma europea UNE-EN 573-3 y estudios desarrollados por HYDRO METAL PRODUCTS y el centro de investigación Extrusion Competence Center (Noruega).

	Si	Fe	Cu	Mn	Mg	Cr	Zn	Ti	Otros
Mínimo	0,30	0,10	0,00	0,00	0,35	0,00	0,00	0,00	0,00
Máximo	0,60	0,30	0,10	0,10	0,60	0,05	0,15	0,10	0,15
Real	0,48	0,20	0,00	0,05	0,38	0,00	0,00	0,01	

Características mecánicas según la norma europea UNE-EN 755-2 y estudios desarrollados por HYDRO METAL PRODUCTS y el centro de investigación Extrusion Competence Center (Noruega).

PERFIL EXTRUIDO								
ESTADO	MEDIDAS mm	Rm MPA		Rp 0,2 MPA		A 50mm%	Dureza (Rango aproximado)	
	Espesor	Min.	Máx.	Min.	Máx.	Min.	Webster	Vickers
T-4	<=25	120	-	60	-	12	7,5	50
T-5	<=5	160	-	120	-	6	9	57
	5<e<=25	140	-	100	-			
T-6	<=3	190	-	150	-	6	11	65
	3<e<=25	170	-	140	-			

EN COLOR BLANCO O ANODIZADO

Información de los productos:

- Perfil sanitario. Se encola directamente.



- Casquetes. Se encolan directamente.

